



Leptin in normal physiology and leptin resistance

Shufen Li · Xi Li

Received: 10 October 2015 / Revised: 6 November 2015 / Accepted: 10 November 2015 / Published online: 1 December 2015
© Science China Press and Springer-Verlag Berlin Heidelberg 2016

Abstract Since the discovery of leptin as an adipokine in 1994, much progress has been made in the research about leptin. Circulating leptin binds to leptin receptor, activates STAT3-dependent and STAT3-independent signaling pathways, and plays an effective role in energy homeostasis, neuroendocrine function and metabolism mainly through acting on the central nervous system, especially the hypothalamus. Leptin resistance is considered as a key risk factor for obesity. Various mechanisms have been formulated in order to explain leptin resistance, including impairment in leptin transport, attenuation in leptin signaling, ER stress, inflammation and deficiency in autophagy. Here, we review our current knowledge about leptin action, leptin signaling and leptin resistance, hoping to provide new ideas for the battle against obesity.

Keywords Leptin biology · Leptin function · Leptin signaling · Leptin resistance · Energy homeostasis

1 Introduction

The past decades have witnessed an explosion of the incidence of obesity. Estimates from the World Health Organization (WHO) indicate that worldwide obesity doubled between 1980 and 2008, and as of 2014, at least

600 million adults were obese. Obesity is very closely associated with a myriad of comorbidities, which include hypertension, type 2 diabetes, cardiovascular disease and many types of cancers [1]. Elucidating the mechanisms underlying obesity is urgent and critical in the fight against obesity.

Obesity is characterized by an expanded adipose tissue mass. There are two kinds of adipose tissue: white adipose tissue (WAT) to store energy and brown adipose tissue (BAT) to dissipate energy [2]. BAT has an especially important function in newborns, but gradually disappears or become inactive with age [2]. WAT is not only the largest energy reserve, but also the largest endocrine organ in the body. It has been clearly demonstrated that adipose tissue produces a variety of adipokines and cytokines that regulate important biological processes [3]. Among them, leptin is the first one to be found [4].

The discovery of leptin could be considered the initial milestone for adipokine research. In 1950 and 1966, respectively, two kinds of obese mice derived from homozygous mutations of *ob* and *db* gene were produced in Jackson laboratory [5, 6]. These mice were massively obese, with hyperglycemia, hyperinsulinemia, insulin resistance and peripheral neuropathy [4]. Through parabiosis experiments, scientists postulated the existence of a satiety factor to act on the hypothalamus to regulate food intake and energy consumption [7, 8]. In 1990, successful mapping of the *ob* and *db* gene was reported [9, 10]. Then finally in 1994, Friedman's laboratory cloned *ob* gene through positional cloning [4]. Friedman named this new hormone as "leptin" from the Greek root "lepto", meaning "thin" [11]. A report in 1995 proved that the *db* gene encodes the leptin receptor [12]. Today we know that while *ob/ob* mice possess a single nonsense mutation in the *ob* gene, leading to a truncated nonfunctional form of leptin

SPECIAL TOPIC: Lipid Metabolism and Human Metabolic Disorder.

S. Li · X. Li (✉)

Key Laboratory of Metabolic Molecular Medicine, The Ministry of Education, Department of Biochemistry and Molecular Biology, Fudan University Shanghai Medical College, Shanghai 200032, China
e-mail: lixi@shmu.edu.cn

[4], *db/db* mice have an insertion mutation in the *db* gene that interferes normal splicing of the leptin receptor [13].

In this review, we will focus on leptin function, leptin signaling and recent advances in understanding the possible mechanisms underlying leptin resistance.

2 Leptin biology

Leptin, located on chromosome 7, is a 167-amino acid polypeptide, and molecular weight is 16 kD [14]. It is mainly synthesized and secreted by WAT. However, the placenta, ovary, skeletal muscle, mammary epithelium, bone marrow and lymphoid tissue could also express leptin [15, 16]. The circulating leptin levels are positively correlated with the amount of body fat [17]. Particularly, subcutaneous fat expresses more leptin compared with visceral fat [18]. Women tend to have higher leptin levels than men probably due to larger subcutaneous fat and the influence of sex hormone [19]. Leptin levels also fluctuate according to energy state, with a marked decrease during starvation and an increase in energy surplus states [20]. Other factors including hormones (insulin, estrogen, glucocorticoids, etc.), metabolites (glucose, fatty acid, etc.) and inflammatory cytokines also influence leptin secreting and expression [21–24] (Fig. 1). Besides, leptin levels display a circadian rhythm, with lowest levels in around noon to midafternoon and highest levels between midnight and early morning [25].

Leptin receptor (LepR) belongs to long-chain helical cytokines superfamily. Via alternative splicing, *Lepr*, or *db* gene, produces six LepR isoforms (LepRa, b, c, d, e and f) [12, 26]. These isoforms possess the same extracellular

domain, but differ by their transmembrane and cytoplasmic domains. LepRb is the only form that contains intracellular motifs of approximately 300 amino acid residues. It is ubiquitously expressed in the body and mediates the main effects of leptin on controlling energy homeostasis and body weight [16]. Besides LepRb, the short isoform LepRa also plays essential roles in mediating leptin internalization and signaling [27, 28]. LepRe is soluble and inhibits the transportation of leptin across the blood–brain barrier (BBB) by reducing the endocytosis of leptin [29].

3 Leptin function

Leptin acting on specific populations of neurons in the brain, including hypothalamic, midbrain and brainstem neurons, plays a central role in energy homeostasis and neurofunction [30–32]. Besides, leptin also has multiple roles in metabolism, reproductive system, immune function, etc. [15, 32–35].

3.1 Leptin and the central nervous system

The function of leptin on controlling energy homeostasis and body weight is mainly conducted by the central nervous system. In addition to reducing energy intake via central regulation of appetite and satiety, leptin also promotes energy expenditure and mediates neuroendocrine function and cognition [32].

The leptin receptor LepRb is highly expressed in the brain, particularly in the arcuate (ARC), dorsomedial (DMH), ventromedial (VMH) and ventral premamillary nuclei (PMV) of hypothalamus [36, 37]. Also, these leptin-responsive neurons (designated as the first-order neurons) broadly connect to other neurons in the brain, thus forming a sophisticated neural network [30]. The ARC of the hypothalamus is a critical site of leptin action. Actually, LepRb expression was co-localized with two neuronal populations of ARC: anorexigenic proopiomelanocortin (POMC) neurons and orexigenic agouti-related peptide (AgRP)/neuropeptide Y (NPY) neurons [38]. Leptin signaling activation directly stimulates POMC neurons and thus releases α -melanocyte-stimulating hormone (α -MSH) [30]. α -MSH is an anorexigenic neuropeptide that decreases food intake by binding to and activating melanocortin-4 (MC4R) [39]. On the other side, leptin also inhibits orexigenic neuropeptides AgRP and NPY, which antagonize the α -MSH/MC4R signaling and thus reduce appetite [40]. Recent literature suggests leptin inhibits the rewarding effects of running via LepR-STAT3 modulation of dopamine tone, maybe as an adaptive means to reduce the motivation for feeding [41]. The role of leptin in promoting energy expenditure is mediated by activation of the

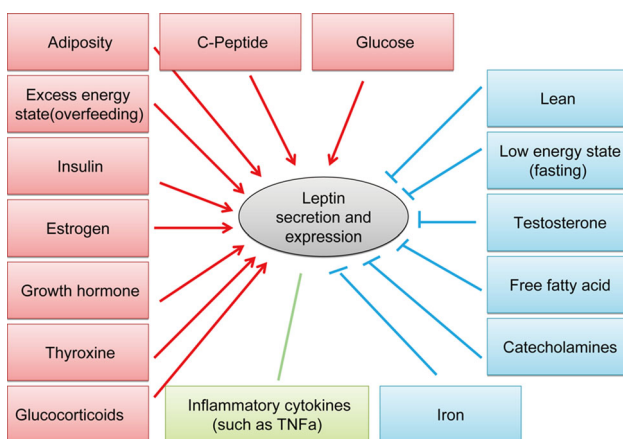


Fig. 1 Factors regulating circulating leptin levels. Notes: The red boxes indicate factors that promote leptin secretion and expression. The blue boxes indicate factors that suppress leptin levels. The green box indicate factor that influences leptin level differently according to the microenvironment

adrenergic system [42], the melanocortin system [43], the enhanced activity of BAT [44] and FoxO1 [45]. Leptin also has been associated with neuroendocrine function, demonstrated by hypogonadism and failure of pubertal development in congenital leptin deficiency mice and the various disorders in metabolic and hormone responses with fasting-induced low leptin levels [46]. Furthermore, recent studies indicate leptin could markedly promote hippocampal synaptic plasticity and long-term depression (LTD) of excitatory synaptic transmission and thus improve cognition and memory [47].

3.2 Leptin and the peripheral tissue

LepR, especially LepRa and LepRb, is widely expressed in the body [26, 48]. Undoubtedly, the central nervous system could exert different effects on the peripheral tissue via neuroregulation. Apart from that, evidence is accumulating that leptin also has direct function in the peripheral tissues [48]. For example, in the skeletal muscle, leptin enhances fatty acid oxidation and glucose uptake [49]. In the pancreas, leptin inhibits insulin and glucagon secretion [34, 50]. In the liver, leptin reduces lipid ectopic accumulation [51, 52]. Also, disruption of hepatic leptin signaling improves hepatic insulin sensitivity and protects mice from age- and diet-induced glucose intolerance [53]. Leptin increased glucose utilization of BAT and lipolysis in WAT via sympathetic neurons that directly “envelope” white adipocytes [54, 55]. Also, leptin and insulin act together to promote WAT browning and weight loss [56]. Leptin influences bone metabolism differently through central or peripheral means [32]. Peripherally, *in vitro* and *in vivo* studies indicate leptin interacts with bone marrow stromal cells and osteoblasts to increase overall bone mass [32]. However, disruption of LepR in peripheral tissues has little or none impact on energy metabolism, indicating that leptin functions mainly through the central nervous system to influence energy metabolism [57] (Fig. 2).

4 Leptin signaling

The binding of leptin to LepRb activates a series of signaling pathways, including the janus kinase 2 (JAK2)/signal transducer and activator of transcription 3 (STAT3), src homology-2-containing protein tyrosine phosphatase 2 (SHP2)/growth factor receptor-bound protein 2 (Grb2)/mitogen-activated protein kinase (MAPK), insulin receptor substrates (IRS)/phosphatidylinositol 3 kinase (PI3K)/mammalian target of rapamycin (mTOR), forkhead box O1 (FoxO1), 5' adenosine monophosphate-activated protein

kinase (AMPK) and others. These pathways act synergistically to fully mediate leptin's function.

4.1 Leptin and STAT3-dependent pathways

The JAK2/STAT3 pathway exerts crucial effects on energy homeostasis and neuroendocrine function [58]. Leptin binds to the extracellular domain of LepRb, causing a conformational change that results in autophosphorylation of associated JAK2 tyrosine kinase, which then phosphorylates LepRb in the indicated residues (Tyr⁹⁸⁵, Tyr¹⁰⁷⁷ and Tyr¹¹³⁸). Phosphorylated Tyr¹¹³⁸ recruits and phosphorylates the transcription factor STAT3. Phosphorylated STAT3 then homodimerizes and translocates to the nucleus, where it induces transcription of an anorexigenic neuropeptide POMC and suppresses that of orexigenic neuropeptides AgRP and NPY. On the other side, phosphorylated Tyr¹⁰⁷⁷ binds to and phosphorylates STAT5; Tyr¹¹³⁸ also partially contributes to the activation of STAT5 [59]. Elimination of STAT5 in the brain causes obesity with hyperphagia, although not that severity as STAT3 deletion [60].

JAK2/STAT3 pathways are controlled positively by SH2B adaptor protein 1 (SH2B1) and negatively by suppressor of cytokine signaling 3 (SOCS3), protein tyrosine phosphatase 1B (PTP1B) and T cell protein tyrosine phosphatase (TCPTP). SH2B1 is an adaptor protein that binds to Tyr⁸¹³ and enhances JAK2 activation, thus promoting leptin signaling [61]. SOCS3 is a target gene of JAK2/STAT3 signaling pathway. It attenuates leptin receptor signaling by binding Tyr⁹⁸⁵ on LepRb and inhibiting JAK2, thus providing a pivotal negative feedback mechanism and preventing the overactivation of leptin signaling pathways [62]. Both PTP1B and TCPTP are protein tyrosine phosphatases; PTP1B mediates the dephosphorylation of JAK2 and TCPTP dephosphorylates STAT3, limiting the extent of leptin action [30].

4.2 Leptin and STAT3-independent pathways

In addition to the JAK2/STAT3 signaling pathway, leptin induces a number of STAT3-independent pathways, which are required to fully mediate the effects of leptin on central and peripheral organs. After leptin binding to the LepRb, phosphorylated JAK2 also phosphorylates IRS and activates PI3K pathways both *in vitro* and *in vivo* settings [15, 63]. Both FoxO1 and mTOR/S6K pathways are important downstream effectors of the IRS/PI3K pathway [32]. FoxO1 exerts significant influence on energy balance and glucose homeostasis in POMC, AgRP and steroidogenic factor 1 (SF-1) neurons of hypothalamus [45, 64]. Important roles for mTOR on leptin signaling have been established both in hypothalamus to regulate anorectic effect and in peripheral

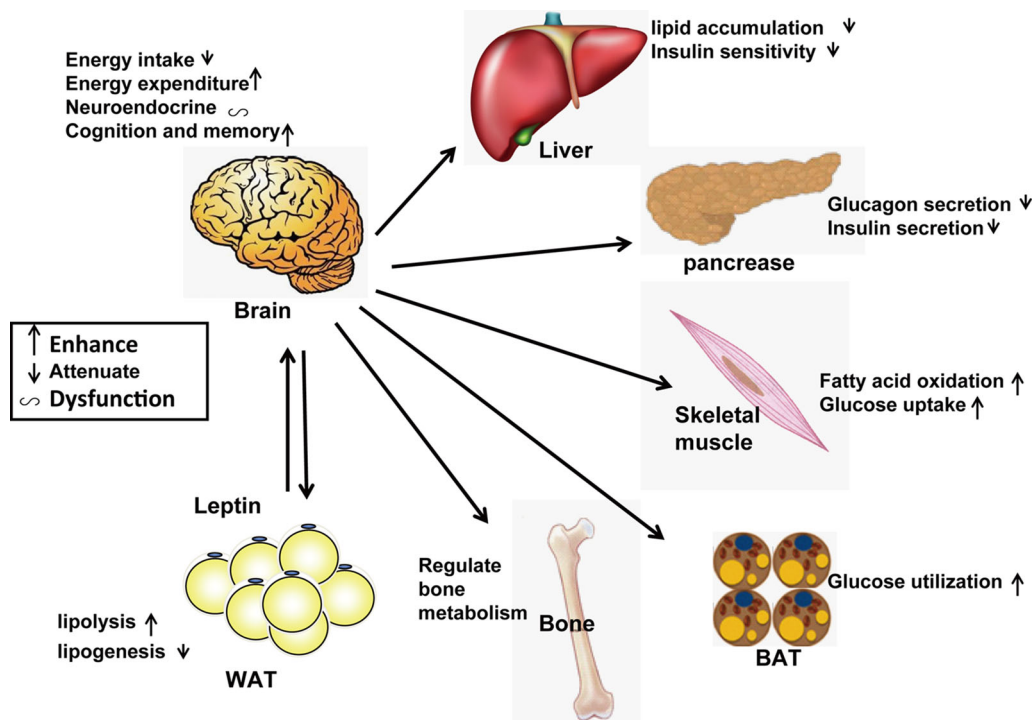


Fig. 2 (Color online) Effects of leptin in the central nervous system and peripheral tissues. Leptin can affect energy homeostasis and neuron function in the CNS through a variety of mechanisms. In the peripheral tissues, leptin exerts different effects in different tissues through both direct and indirect means. Modified from references [34, 51]

tissues to regulate lipid metabolism and inflammation [64–66]. JAK2 phosphorylation also activates SHP2 by binding to phospho-Tyr⁹⁸⁵, which then recruits the adaptor protein Grb2 to prompt activation of ERK1/2 and improve the effect of leptin on energy homeostasis [15]. The condition of AMPK pathway is complicated. While leptin activates AMPK and thus promotes fatty acid oxidation in skeletal muscle, it exerts inhibitory effect on AMPK in the hypothalamus and help to exert leptin’s anorexigenic response [15]. Other MAPK pathways, namely JNK and p38 MAPK, are mainly participate in the peripheral function of leptin [15, 30] (Fig. 3).

5 Leptin resistance

Since the discovery of leptin in 1994, people have high expectation for leptin to combat obesity. Actually, leptin replacement treatment could improve or normalize the neuroendocrine and metabolic abnormalities in leptin deficiency conditions such as lipodystrophy, hypothalamic amenorrhea and congenital leptin deficiency (CLD) [67]. Metreleptin, an analog of the human hormone leptin being developed by Amylin Pharmaceuticals, was approved in the USA in 2014 for use in diseases associated with leptin deficiency such as lipodystrophy [68]. However, in most

cases, obese individuals have elevated plasma leptin concentrations. Exogenous leptin administration exerts poor effect on weight reduction in the majority of human obesity [69, 70]. This phenomenon is referred to as leptin resistance [71]. Mechanisms underlying leptin resistance are multifactorial and complicated. Impairment in leptin transportation, attenuation in leptin signaling, endoplasmic reticulum (ER) stress, deficiency in autophagy and inflammation are the most common proposed reasons for obesity-associated leptin resistance (Fig. 4).

5.1 Impairment in leptin transportation to the brain

To act centrally, circulating leptin must first enter the brain through the blood–brain barrier. While debate about leptin’s exact route of transportation across the central nervous system continues, LepRa, LepRe and megalin have been proposed to be involved in this process [27, 29, 72]. Alternatively, circulating leptin could also directly contact the circumventricular organs (for example, the median eminence), which lack a BBB [73]. During obesity, the cerebrospinal-fluid/serum leptin ratio is decreased [74, 75], indicating impairment in leptin transport [76], which might contribute to leptin resistance. The reasons behind this might be that leptin enters the brain in a saturable manner [77]. As serum leptin levels increase during obesity, the

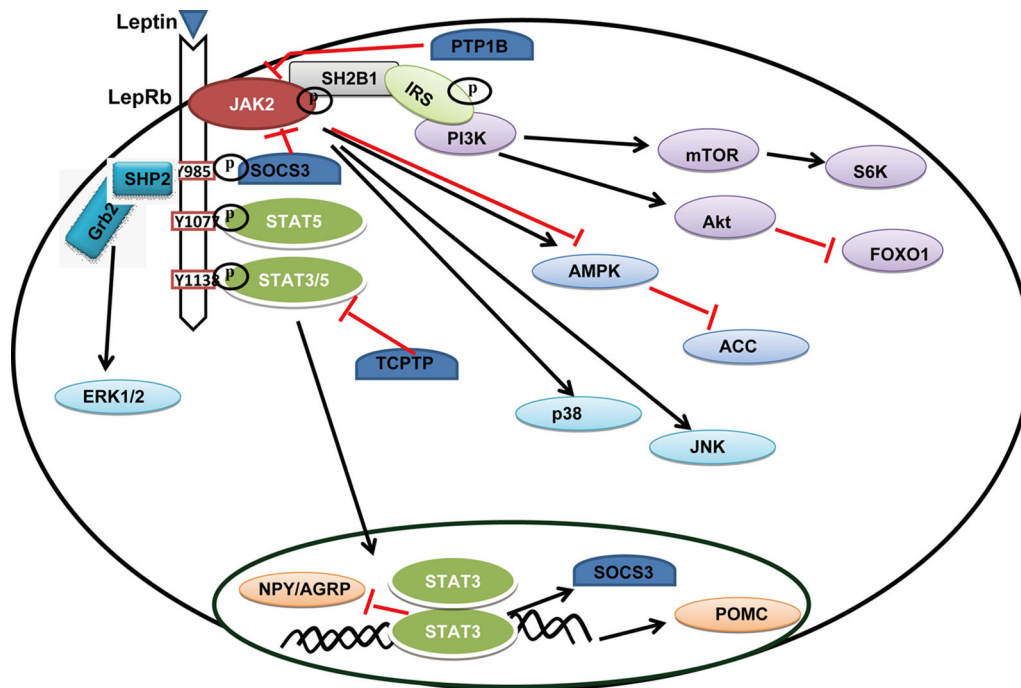


Fig. 3 (Color online) Leptin binds to LepRb and activates JAK2. JAK2 then phosphorylates LepRb on Tyr⁹⁸⁵, Tyr¹⁰⁷⁷ and Tyr¹¹³⁸. Phosphorylated Tyr⁹⁸⁵, -Tyr¹⁰⁷⁷ and -Tyr¹¹³⁸ bind to different downstream molecules and activate the JAK2/STAT3, JAK2/STAT5, PI3K/AKT/mTOR, SHP2/Grb2/ERK, JNK and p38 MAPK pathways. Leptin could activate or inhibit AMPK signaling pathway in different cell types. Leptin signaling activation induces the expression of POMC and SOCS3, and attenuates the expression of NPY and AGRP. These pathways act coordinately to regulate energy homeostasis. LepRb signaling is regulated negatively by SOCS3, PTP1B and TCPTP and positively by SH2B1

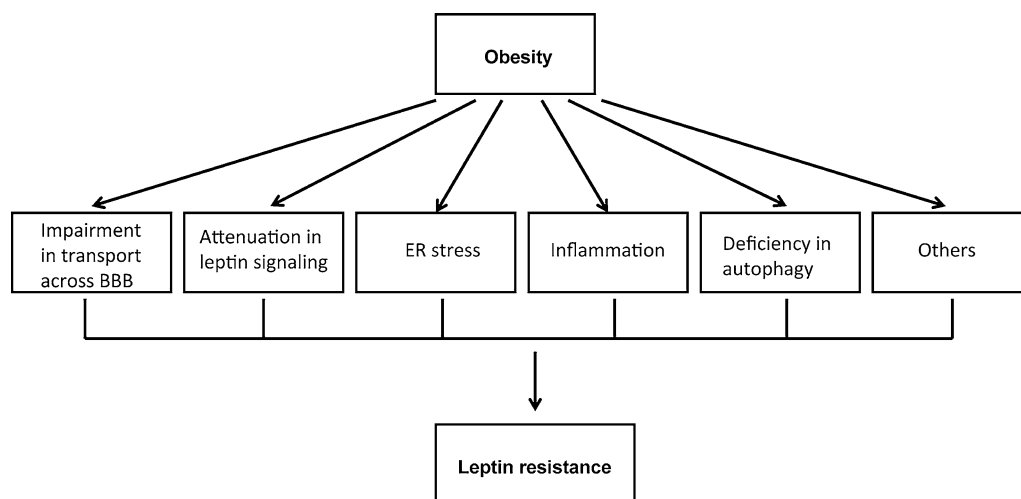


Fig. 4 Proposed mechanisms of leptin resistance. During obesity, impairment in transport across BBB, attenuation in leptin signaling, ER stress, inflammation, deficiency in autophagy and others all influence the function of leptin and lead to leptin resistance

leptin transporter is increasingly saturated and blocks the access of leptin into the CNS [78]. Besides, fatty acids, tumor necrosis factor- α (TNF- α) and triglycerides are reported to influence leptin transporter level [79, 80]. Clearly, more studies are needed to clarify the reason for impaired brain leptin transport and the relationship between this and leptin resistance.

5.2 Attenuation in leptin signaling

Impairment in each component of the leptin signaling pathways could lead to leptin resistance. In diet-induced obese (DIO) mice, leptin signaling (demonstrated by leptin-induced STAT3 phosphorylation) is profoundly decreased in the hypothalamus [81, 82]. As described

above, leptin signaling is negatively regulated by SOCS3, PTP1B, TCPTP and others. The expression levels of hypothalamic SOCS3, PTP1B and TCPTP are elevated in obesity mice and thus might contribute to attenuation of leptin signaling and leptin resistance [83–85]. Also, LepRb mRNA and protein levels were declined in DIO rats with respect to those of normal chow-fed rats [86]. SH2B1 was a positive regulator of leptin signaling, and deletion of the *SH2B1* gene results in leptin resistance, hyperphagia and morbid obesity [87].

5.3 ER stress

Numerous studies have provided evidence that ER stress in hypothalamic neurons can impair leptin signaling [88, 89]. Both increased ER stress and activated unfolded protein response (UPR) in the hypothalamus of obese mice contribute to the compromise of leptin receptor signaling [88]. By contrast, reducing ER stress by chemical chaperones, 4-phenyl butyric acid (PBA) and tauroursodeoxycholic acid (TUDCA), can improve leptin sensitivity [88]. Spliced X-box binding protein 1 (Xbp1) is one of the ER-stress-responsive genes. It has reported that neuron-specific XBP1 knockout mice have ER stress, severe hyperleptinemia, leptin resistance and obesity [88]. On the other hand, overexpression of XBP1 *in vitro* and *in vivo* settings increases leptin sensitivity [88, 90]. There are two possible mechanisms of ER stress resulting in leptin resistance: defective leptin signaling by SOCS3 and PTP1B and impaired POMC processing through diminished expression of hypothalamic mitofusin 2 (Mfn2) [91]. Recently, celastrol, a pentacyclic triterpene extracted from the roots of *Tripterygium Wilfordii* (thunder god vine) plant, is reported to reduce hypothalamic ER stress and re-establish hypothalamic sensitivity to leptin in obesity [92].

5.4 Deficiency in autophagy

Recent studies indicate autophagy is associated with leptin resistance. Inhibition of autophagy in the hypothalamus by knocking down autophagy-related protein 7 (Atg7) and injecting Atg7-specific small hairpin RNA (shRNA) exhibits obesity and leptin resistance [93]. Particularly, POMC-neuron-specific Atg7-knockout mice display leptin resistance probably due to the inability of leptin to activate and phosphorylate STAT3 [94]. On the other side, AgRP-neuron-specific Atg7-knockout mice lead to reduced body fat and a reduced rebound effect on food intake after fasting, suggesting improvement in leptin sensitivity [95].

5.5 Inflammation

Obesity is associated with low-grade chronic inflammation. Activation of the toll-like receptors (TLRs) or hypothalamic IKK β /NF- κ B pathway is reported to induce hypothalamic inflammation and leptin resistance [89, 96]. Deletion of neuronal TLR adaptor molecule MyD88 protects from high-fat diet-induced leptin resistance and obesity [97]. Furthermore, depleting microglia from the mediobasal hypothalamus eliminates inflammation and neuronal stresses and improves leptin sensitivity in mice challenged with excess saturated fatty acids consumption [98]. All these data suggest inflammation may contribute to leptin resistance during obesity.

5.6 Others

Apart from above-mentioned mechanisms, other factors also contribute to the progression of leptin resistance. Firstly, although rare, there are cases of mutations of the leptin receptor and other rare monogenic obesity syndromes [15, 99]. Epigenetic regulation of the leptin signaling circuit could be a potential mechanism of leptin function disturbance [78]. Extracellular circulating factors, such as C-reactive protein, could bind leptin, thus altering its biological actions [100]. Latest study reported circadian dysfunction induced leptin resistance in mice [101]. Finally, hyperleptinemia *per se* might also be a contributing factor of leptin resistance [102]. More studies are warranted to fully clarify the underlying mechanisms of leptin resistance in order to better combat obesity.

5.7 Redefine the concept of “leptin resistance”

It is noteworthy that the term “leptin resistance” is commonly used and appears to connote diverse meanings in distinct circumstances [71]. Recently, Ottaway et al. reported that hyperleptinemic DIO mice retain endogenous leptin physiologic action [103]. That is, endogenous leptin suppress food intake and body weight gain to the same extent in DIO and lean animals [104]. According to this, Myers et al. [104] declared that since there is no pathophysiological decrease in endogenous leptin action, leptin resistance could be defined as the failure of pharmacologic leptin to increase LepRb signaling and physiologic responses in hyperleptinemic obesity. Besides, there is a discrepancy in the phosphorylation levels of STAT3 (pSTAT3) during obesity from different papers. While Ottaway et al. [103, 105] and some found DIO mice had increased pSTAT3 in the ARC compared with the lean controls; others reported reduced pSTAT3 levels in the obesity [81, 82]. More studies are required to clearly clarify

this issue, and we need to reach a consensus on the exact definition and significance of leptin resistance.

6 Concluding remarks and future perspective

As research continued, many advances have been made about the actions of leptin and the mechanisms of leptin resistance. However, there are still many issues that remain to be addressed.

Firstly, we need to identify the function of short-form leptin receptors and the direct function of leptin in peripheral tissues. To clarify the direct function of leptin in the peripheral tissues, the CNS effect of leptin must first be excluded. Nowadays, numerous studies have been conducted using the cell lines or primary cells derived from peripheral tissues. However, considering the complexity and heterogeneity of the cell lines, the results from different cell lines sometimes are controversial. Also, further studies are needed to elucidate the relative importance of leptin direct function in the periphery tissues.

Secondly, how different pathways downstream of leptin (STAT3, PI3K, ERK, FoxO1, AMPK, etc.) act specifically or coordinately in the regulation of energy homeostasis and other functions. Certain downstream pathway of leptin signaling reacts differentially in discrete subpopulations of LepRb-expressing neurons and neural circuits. It is of great significance to anatomically and biochemically characterize how these neurons and neural circuit mediate energy homeostasis and body weight at the control of various hormonal, neuronal and metabolic signals that cross-talk with leptin.

Thirdly, clarifying the exact definition of “leptin resistance” is important and urgent. Also, since obesity and leptin resistance are closely correlated, an important issue that remains to be clarified is the causal and conditional relationship between obesity and leptin resistance.

And lastly but most significantly, the exploration of new therapeutic drugs is based on more and more comprehensive understanding of leptin action. As leptin resistance is an important risk factor for obesity, but the vast majority of obese individuals are resistant or tolerant to leptin, more studies are required to examine effective measures of improving leptin sensitivity. Also, identifying predictors of leptin responsiveness in order to find the population who might benefit most from leptin-sensitizing agents is profitable.

Acknowledgments This work was supported by the National Basic Research Program of China (2013CB530601, 2011CB910201), the National Natural Science Foundation of China (31571401, 81270954, 31030048, 81390350), the Shanghai Rising Star Program (13QH1400800). The Department of Biochemistry and Molecular Biology at Fudan University Shanghai Medical College is supported

by the Shanghai Leading Academic Discipline Projects B110 and by “985” Project 985III-YFX0302.

Conflict of interest The authors declare that they have no conflict of interest.

References

- Haslam DW, James WP (2005) Obesity. *Lancet* 366:1197–1209
- Pfeifer A, Hoffmann LS (2015) Brown, beige, and white: the new color code of fat and its pharmacological implications. *Annu Rev Pharmacol Toxicol* 55:207–227
- Fasshauer M, Bluher M (2015) Adipokines in health and disease. *Trends Pharmacol Sci* 36:461–470
- Zhang Y, Proenca R, Maffei M et al (1994) Positional cloning of the mouse obese gene and its human homologue. *Nature* 372:425–432
- Ingalls AM, Dickie MM, Snell GD (1950) Obese, a new mutation in the house mouse. *J Hered* 41:317–318
- Hummel KP, Dickie MM, Coleman DL (1966) Diabetes, a new mutation in the mouse. *Science* 153:1127–1128
- Hervey GR (1959) The effects of lesions in the hypothalamus in parabiotic rats. *J Physiol* 145:336–352
- Coleman DL (1973) Effects of parabiosis of obese with diabetes and normal mice. *Diabetologia* 9:294–298
- Leibel RL, Bahary N, Friedman JM (1990) Genetic variation and nutrition in obesity: approaches to the molecular genetics of obesity. *World Rev Nutr Diet* 63:90–101
- Bahary N, Leibel RL, Joseph L et al (1990) Molecular mapping of the mouse db mutation. *Proc Natl Acad Sci USA* 87:8642–8646
- Halaas JL, Gajiwala KS, Maffei M et al (1995) Weight-reducing effects of the plasma protein encoded by the obese gene. *Science* 269:543–546
- Tartaglia LA, Dembski M, Weng X et al (1995) Identification and expression cloning of a leptin receptor, OB-R. *Cell* 83:1263–1271
- Lee GH, Proenca R, Montez JM et al (1996) Abnormal splicing of the leptin receptor in diabetic mice. *Nature* 379:632–635
- Zhang F, Basinski MB, Beals JM et al (1997) Crystal structure of the obese protein leptin-E100. *Nature* 387:206–209
- Dardeno TA, Chou SH, Moon HS et al (2010) Leptin in human physiology and therapeutics. *Front Neuroendocrinol* 31:377–393
- Park HK, Ahima RS (2014) Leptin signaling. *F1000Prime Rep* 6:73
- Considine RV, Sinha MK, Heiman ML et al (1996) Serum immunoreactive-leptin concentrations in normal-weight and obese humans. *N Engl J Med* 334:292–295
- Hube F, Lietz U, Igel M et al (1996) Difference in leptin mRNA levels between omental and subcutaneous abdominal adipose tissue from obese humans. *Horm Metab Res* 28:690–693
- Rosenbaum M, Leibel RL (1999) Clinical review 107: Role of gonadal steroids in the sexual dimorphisms in body composition and circulating concentrations of leptin. *J Clin Endocrinol Metab* 84:1784–1789
- Ahima RS, Prabakaran D, Mantzoros C et al (1996) Role of leptin in the neuroendocrine response to fasting. *Nature* 382:250–252
- Moon HS, Dalamaga M, Kim SY et al (2013) Leptin’s role in lipodystrophic and nonlipodystrophic insulin-resistant and diabetic individuals. *Endocr Rev* 34:377–412
- Pan H, Guo J, Su Z (2014) Advances in understanding the interrelations between leptin resistance and obesity. *Physiol Behav* 130:157–169

23. Gao Y, Li Z, Gabrielsen JS et al (2015) Adipocyte iron regulates leptin and food intake. *J Clin Invest* 125:3281–3291
24. Garcia-Serrano S, Gutierrez-Repiso C, Gonzalo M et al (2015) C-peptide modifies leptin and visfatin secretion in human adipose tissue. *Obesity (Silver Spring)* 23:1607–1615
25. Sinha MK, Ohannesian JP, Heiman ML et al (1996) Nocturnal rise of leptin in lean, obese, and non-insulin-dependent diabetes mellitus subjects. *J Clin Invest* 97:1344–1347
26. Wada N, Hirako S, Takenoya F et al (2014) Leptin and its receptors. *J Chem Neuroanat* 61–62:191–199
27. Hileman SM, Tornoe J, Flier JS et al (2000) Transcellular transport of leptin by the short leptin receptor isoform ObRa in Madin-Darby Canine Kidney cells. *Endocrinology* 141:1955–1961
28. Hileman SM, Pierroz DD, Masuzaki H et al (2002) Characterization of short isoforms of the leptin receptor in rat cerebral microvessels and of brain uptake of leptin in mouse models of obesity. *Endocrinology* 143:775–783
29. Tu H, Kastin AJ, Hsueh H et al (2008) Soluble receptor inhibits leptin transport. *J Cell Physiol* 214:301–305
30. Zhou Y, Rui L (2013) Leptin signaling and leptin resistance. *Front Med* 7:207–222
31. Rosenbaum M, Leibel RL (2014) 20 years of leptin: role of leptin in energy homeostasis in humans. *J Endocrinol* 223:T83–T96
32. Dalamaga M, Chou SH, Shields K et al (2013) Leptin at the intersection of neuroendocrinology and metabolism: current evidence and therapeutic perspectives. *Cell Metab* 18:29–42
33. Matarese G, Moschos S, Mantzoros CS (2005) Leptin in immunology. *J Immunol* 174:3137–3142
34. Park HK, Ahima RS (2015) Physiology of leptin: energy homeostasis, neuroendocrine function and metabolism. *Metabolism* 64:24–34
35. Chou SH, Mantzoros C (2014) 20 years of leptin: role of leptin in human reproductive disorders. *J Endocrinol* 223:T49–T62
36. Schwartz MW, Seeley RJ, Campfield LA et al (1996) Identification of targets of leptin action in rat hypothalamus. *J Clin Invest* 98:1101–1106
37. Scott MM, Lachey JL, Sternson SM et al (2009) Leptin targets in the mouse brain. *J Comp Neurol* 514:518–532
38. Munzberg H, Morrison CD (2015) Structure, production and signaling of leptin. *Metabolism* 64:13–23
39. Ste ML, Miura GI, Marsh DJ et al (2000) A metabolic defect promotes obesity in mice lacking melanocortin-4 receptors. *Proc Natl Acad Sci USA* 97:12339–12344
40. Ollmann MM, Wilson BD, Yang YK et al (1997) Antagonism of central melanocortin receptors in vitro and in vivo by agouti-related protein. *Science* 278:135–138
41. Fernandes MF, Matthys D, Hryhorczuk C et al (2015) Leptin suppresses the rewarding effects of running via STAT3 signaling in dopamine neurons. *Cell Metab* 22:741–749
42. Mantzoros CS, Qu D, Frederich RC et al (1996) Activation of beta(3) adrenergic receptors suppresses leptin expression and mediates a leptin-independent inhibition of food intake in mice. *Diabetes* 45:909–914
43. Pierroz DD, Ziotopoulou M, Ungsuan L et al (2002) Effects of acute and chronic administration of the melanocortin agonist MTII in mice with diet-induced obesity. *Diabetes* 51:1337–1345
44. Scarpace PJ, Matheny M, Pollock BH et al (1997) Leptin increases uncoupling protein expression and energy expenditure. *Am J Physiol* 273:E226–E230
45. Kim KW, Donato JJ, Berglund ED et al (2012) FOXO1 in the ventromedial hypothalamus regulates energy balance. *J Clin Invest* 122:2578–2589
46. Licinio J, Caglayan S, Ozata M et al (2004) Phenotypic effects of leptin replacement on morbid obesity, diabetes mellitus, hypogonadism, and behavior in leptin-deficient adults. *Proc Natl Acad Sci USA* 101:4531–4536
47. Harvey J (2007) Leptin: a diverse regulator of neuronal function. *J Neurochem* 100:307–313
48. Bjorbaek C, Kahn BB (2004) Leptin signaling in the central nervous system and the periphery. *Recent Prog Horm Res* 59:305–331
49. Minokoshi Y, Kim YB, Peroni OD et al (2002) Leptin stimulates fatty-acid oxidation by activating AMP-activated protein kinase. *Nature* 415:339–343
50. Cohen B, Novick D, Rubinstein M (1996) Modulation of insulin activities by leptin. *Science* 274:1185–1188
51. Maiorana A, Del BC, Cianfarani S (2007) Adipose tissue: a metabolic regulator. Potential implications for the metabolic outcome of subjects born small for gestational age (SGA). *Rev Diabet Stud* 4:134–146
52. German JP, Wisse BE, Thaler JP et al (2010) Leptin deficiency causes insulin resistance induced by uncontrolled diabetes. *Diabetes* 59:1626–1634
53. Huynh FK, Levi J, Denroche HC et al (2010) Disruption of hepatic leptin signaling protects mice from age- and diet-related glucose intolerance. *Diabetes* 59:3032–3040
54. Siegrist-Kaiser CA, Pauli V, Juge-Aubry CE et al (1997) Direct effects of leptin on brown and white adipose tissue. *J Clin Invest* 100:2858–2864
55. Zeng W, Pirzgalska RM, Pereira MM et al (2015) Sympathetic neuro-adipose connections mediate leptin-driven lipolysis. *Cell* 163:84–94
56. Dodd GT, Decherf S, Loh K et al (2015) Leptin and insulin act on POMC neurons to promote the browning of white fat. *Cell* 160:88–104
57. Guo K, McMinn JE, Ludwig T et al (2007) Disruption of peripheral leptin signaling in mice results in hyperleptinemia without associated metabolic abnormalities. *Endocrinology* 148:3987–3997
58. Bates SH, Kulkarni RN, Seifert M et al (2005) Roles for leptin receptor/STAT3-dependent and -independent signals in the regulation of glucose homeostasis. *Cell Metab* 1:169–178
59. Gong Y, Ishida-Takahashi R, Villanueva EC et al (2007) The long form of the leptin receptor regulates STAT5 and ribosomal protein S6 via alternate mechanisms. *J Biol Chem* 282:31019–31027
60. Lee JY, Muenzberg H, Gavrilova O et al (2008) Loss of cytokine-STAT5 signaling in the CNS and pituitary gland alters energy balance and leads to obesity. *PLoS ONE* 3:e1639
61. Samuel-Mendelsohn S, Inbar M, Weiss-Messer E et al (2011) Leptin signaling and apoptotic effects in human prostate cancer cell lines. *Prostate* 71:929–945
62. Bjorbaek C, Lavery HJ, Bates SH et al (2000) SOCS3 mediates feedback inhibition of the leptin receptor via Tyr985. *J Biol Chem* 275:40649–40657
63. Xu AW, Kaelin CB, Takeda K et al (2005) PI3K integrates the action of insulin and leptin on hypothalamic neurons. *J Clin Invest* 115:951–958
64. Varela L, Horvath TL (2012) Leptin and insulin pathways in POMC and AgRP neurons that modulate energy balance and glucose homeostasis. *EMBO Rep* 13:1079–1086
65. Maya-Monteiro CM, Bozza PT (2008) Leptin and mTOR: partners in metabolism and inflammation. *Cell Cycle* 7:1713–1717
66. Cota D, Proulx K, Smith KA et al (2006) Hypothalamic mTOR signaling regulates food intake. *Science* 312:927–930
67. Paz-Filho G, Mastronardi CA, Licinio J (2015) Leptin treatment: facts and expectations. *Metabolism* 64:146–156
68. Chou K, Perry CM (2013) Metreleptin: first global approval. *Drugs* 73:989–997

69. Heymsfield SB, Greenberg AS, Fujioka K et al (1999) Recombinant leptin for weight loss in obese and lean adults: a randomized, controlled, dose-escalation trial. *JAMA* 282:1568–1575
70. Mantzoros CS, Flier JS (2000) Editorial: leptin as a therapeutic agent—trials and tribulations. *J Clin Endocrinol Metab* 85:4000–4002
71. Myers MJ, Heymsfield SB, Haft C et al (2012) Challenges and opportunities of defining clinical leptin resistance. *Cell Metab* 15:150–156
72. Dietrich MO, Spuch C, Antequera D et al (2008) Megalin mediates the transport of leptin across the blood-CSF barrier. *Neurobiol Aging* 29:902–912
73. Faouzi M, Leshan R, Bjornholm M et al (2007) Differential accessibility of circulating leptin to individual hypothalamic sites. *Endocrinology* 148:5414–5423
74. Schwartz MW, Peskind E, Raskind M et al (1996) Cerebrospinal fluid leptin levels: relationship to plasma levels and to adiposity in humans. *Nat Med* 2:589–593
75. Caro JF, Kolaczynski JW, Nyce MR et al (1996) Decreased cerebrospinal-fluid/serum leptin ratio in obesity: a possible mechanism for leptin resistance. *Lancet* 348:159–161
76. Banks WA, DiPalma CR, Farrell CL (1999) Impaired transport of leptin across the blood-brain barrier in obesity. *Peptides* 20:1341–1345
77. Banks WA, Kastin AJ, Huang W et al (1996) Leptin enters the brain by a saturable system independent of insulin. *Peptides* 17:305–311
78. Crujeiras AB, Carreira MC, Cabia B et al (2015) Leptin resistance in obesity: an epigenetic landscape. *Life Sci* 140:57–63
79. Oh-I S, Shimizu H, Sato T et al (2005) Molecular mechanisms associated with leptin resistance: n-3 polyunsaturated fatty acids induce alterations in the tight junction of the brain. *Cell Metab* 1:331–341
80. Banks WA, Coon AB, Robinson SM et al (2004) Triglycerides induce leptin resistance at the blood-brain barrier. *Diabetes* 53:1253–1260
81. Munzberg H, Flier JS, Bjorbaek C (2004) Region-specific leptin resistance within the hypothalamus of diet-induced obese mice. *Endocrinology* 145:4880–4889
82. El-Haschimi K, Pierroz DD, Hileman SM et al (2000) Two defects contribute to hypothalamic leptin resistance in mice with diet-induced obesity. *J Clin Invest* 105:1827–1832
83. Bjorbaek C, Elmquist JK, Frantz JD et al (1998) Identification of SOCS-3 as a potential mediator of central leptin resistance. *Mol Cell* 1:619–625
84. Loh K, Fukushima A, Zhang X et al (2011) Elevated hypothalamic TCPTP in obesity contributes to cellular leptin resistance. *Cell Metab* 14:684–699
85. White CL, Whittington A, Barnes MJ et al (2009) HF diets increase hypothalamic PTP1B and induce leptin resistance through both leptin-dependent and -independent mechanisms. *Am J Physiol Endocrinol Metab* 296:E291–E299
86. Wilsey J, Scarpace PJ (2004) Caloric restriction reverses the deficits in leptin receptor protein and leptin signaling capacity associated with diet-induced obesity: role of leptin in the regulation of hypothalamic long-form leptin receptor expression. *J Endocrinol* 181:297–306
87. Ren D, Li M, Duan C et al (2005) Identification of SH2-B as a key regulator of leptin sensitivity, energy balance, and body weight in mice. *Cell Metab* 2:95–104
88. Ozcan L, Ergin AS, Lu A et al (2009) Endoplasmic reticulum stress plays a central role in development of leptin resistance. *Cell Metab* 9:35–51
89. Zhang X, Zhang G, Zhang H et al (2008) Hypothalamic IKK-beta/NF-kappaB and ER stress link overnutrition to energy imbalance and obesity. *Cell* 135:61–73
90. Williams KW et al (2014) Xbp1 s in Pomc neurons connects ER stress with energy balance and glucose homeostasis. *Cell Metab* 20:471–482
91. Ramirez S, Claret M (2015) Hypothalamic ER stress: a bridge between leptin resistance and obesity. *FEBS Lett* 589:1678–1687
92. Liu J, Lee J, Salazar HM et al (2015) Treatment of obesity with celastrol. *Cell* 161:999–1011
93. Meng Q, Cai D (2011) Defective hypothalamic autophagy directs the central pathogenesis of obesity via the IkappaB kinase beta (IKKbeta)/NF-kappaB pathway. *J Biol Chem* 286:32324–32332
94. Quan W, Kim HK, Moon EY et al (2012) Role of hypothalamic proopiomelanocortin neuron autophagy in the control of appetite and leptin response. *Endocrinology* 153:1817–1826
95. Kaushik S, Rodriguez-Navarro JA, Arias E et al (2011) Autophagy in hypothalamic AgRP neurons regulates food intake and energy balance. *Cell Metab* 14:173–183
96. Milanski M, Degasperi G, Coope A et al (2009) Saturated fatty acids produce an inflammatory response predominantly through the activation of TLR4 signaling in hypothalamus: implications for the pathogenesis of obesity. *J Neurosci* 29:359–370
97. Kleinridders A, Schenten D, Konner AC et al (2009) MyD88 signaling in the CNS is required for development of fatty acid-induced leptin resistance and diet-induced obesity. *Cell Metab* 10:249–259
98. Valdearcos M, Robblee MM, Benjamin DI et al (2014) Microglia dictate the impact of saturated fat consumption on hypothalamic inflammation and neuronal function. *Cell Rep* 9:2124–2138
99. Farooqi IS et al (2007) Clinical and molecular genetic spectrum of congenital deficiency of the leptin receptor. *N Engl J Med* 356:237–247
100. Hribal ML, Fiorentino TV, Sesti G (2014) Role of C reactive protein (CRP) in leptin resistance. *Curr Pharm Des* 20:609–615
101. Kettner NM, Mayo SA, Hua J et al (2015) Circadian dysfunction induces leptin resistance in mice. *Cell Metab* 22:448–459
102. Knight ZA, Hannan KS, Greenberg ML et al (2010) Hyperleptinemia is required for the development of leptin resistance. *PLoS ONE* 5:e11376
103. Ottaway N, Mahbod P, Rivero B et al (2015) Diet-induced obese mice retain endogenous leptin action. *Cell Metab* 21:877–882
104. Myers MJ (2015) Leptin keeps working, even in obesity. *Cell Metab* 21:791–792
105. Kim WG, Park JW, Willingham MC et al (2013) Diet-induced obesity increases tumor growth and promotes anaplastic change in thyroid cancer in a mouse model. *Endocrinology* 154:2936–2947